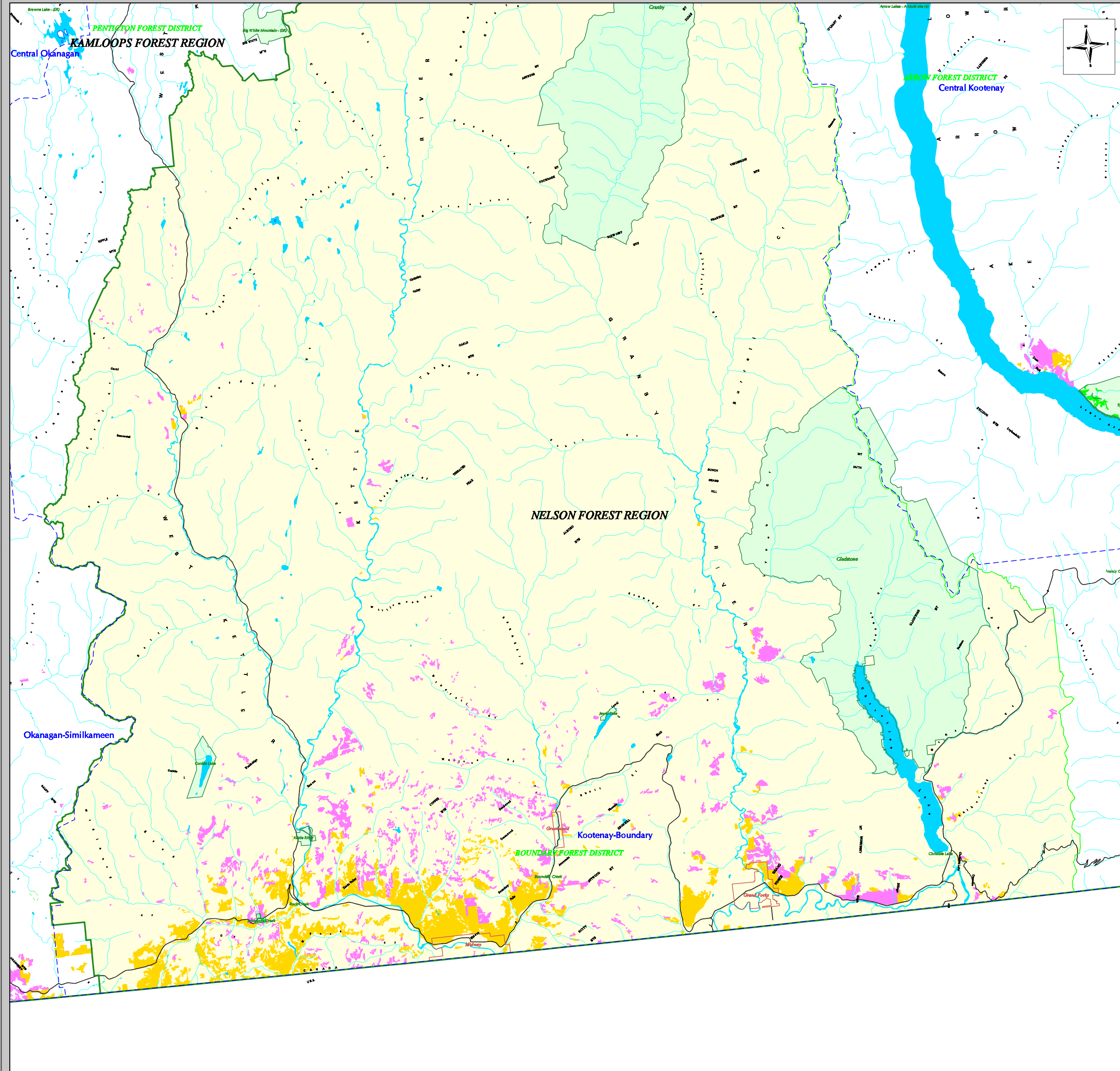


BOUNDARY FOREST DISTRICT GRASSLANDS: Land Status



LEGEND

Grasslands Land Status

- Private Land
- Indian Reserve
- Federal Land *
- Crown Land
- Protected Area* or Ecological Reserve
- National Park *
- Non-Governmental Organization Acquired Land *
- Grazing Lease

- Major Water Bodies
- Parks and Protected Areas
- Forest District or TSA of Interest
- Forest Regions
- Forest Districts
- Regional District Boundary
- Municipal Boundary
- Major Highways

GRASSLANDS LAND STATUS DEFINITIONS:

- * Federal Land - includes Military Reserves, Dominion Government Blocks and other land not designated as Indian Reserve.
- * Protected Area - includes parks, protected areas, ecological reserves and wildlife reserves (wildlife reserves in Okanagan TSA only).
- * National Park - relevant only to Invermere Forest District.
- * Non-governmental Organization Acquired Land - land acquired primarily by conservation groups such as The Land Conservancy, The Nature Trust and the Nature Conservancy of Canada.

GRASSLANDS DEFINITION:

- * Open dry forest stand adjacent to open grasslands
- * Open dry forest stand in NDT4
- * Burned forest stand in Ponderosa Pine or Bunchgrass Biogeoclimatic Zone
- * Open grasslands with logging history
- * "Open" - having a tree crown closure of less than 10%
- * "Dry forest stand" - specific Douglas Fir, Ponderosa Pine, Lodgepole Pine, or Larch leading stands with a drier second species
- * "NDT4" - Natural Disturbance Type 4; frequent, stand maintaining fires (Interior Douglas Fir, Ponderosa Pine, and Bunchgrass Biogeoclimatic Zones)

Grasslands mapping in the Makwa Foothills (West Fort St. John District and Southwest Fort Nelson District) derived from 1:250 000 scale base data. Mapping in remaining areas of each District derived from 1:20 000 scale base data.



The Grasslands Conservation Council of British Columbia
 The Grasslands Conservation Council of British Columbia
 2544 Land Street, Kamloops, BC, V2C 0P1
 Phone: 250-714-9787 Fax: 250-714-9287 E-Mail: OCC@grasslands.org
 www.grasslands.org

