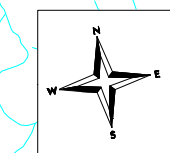
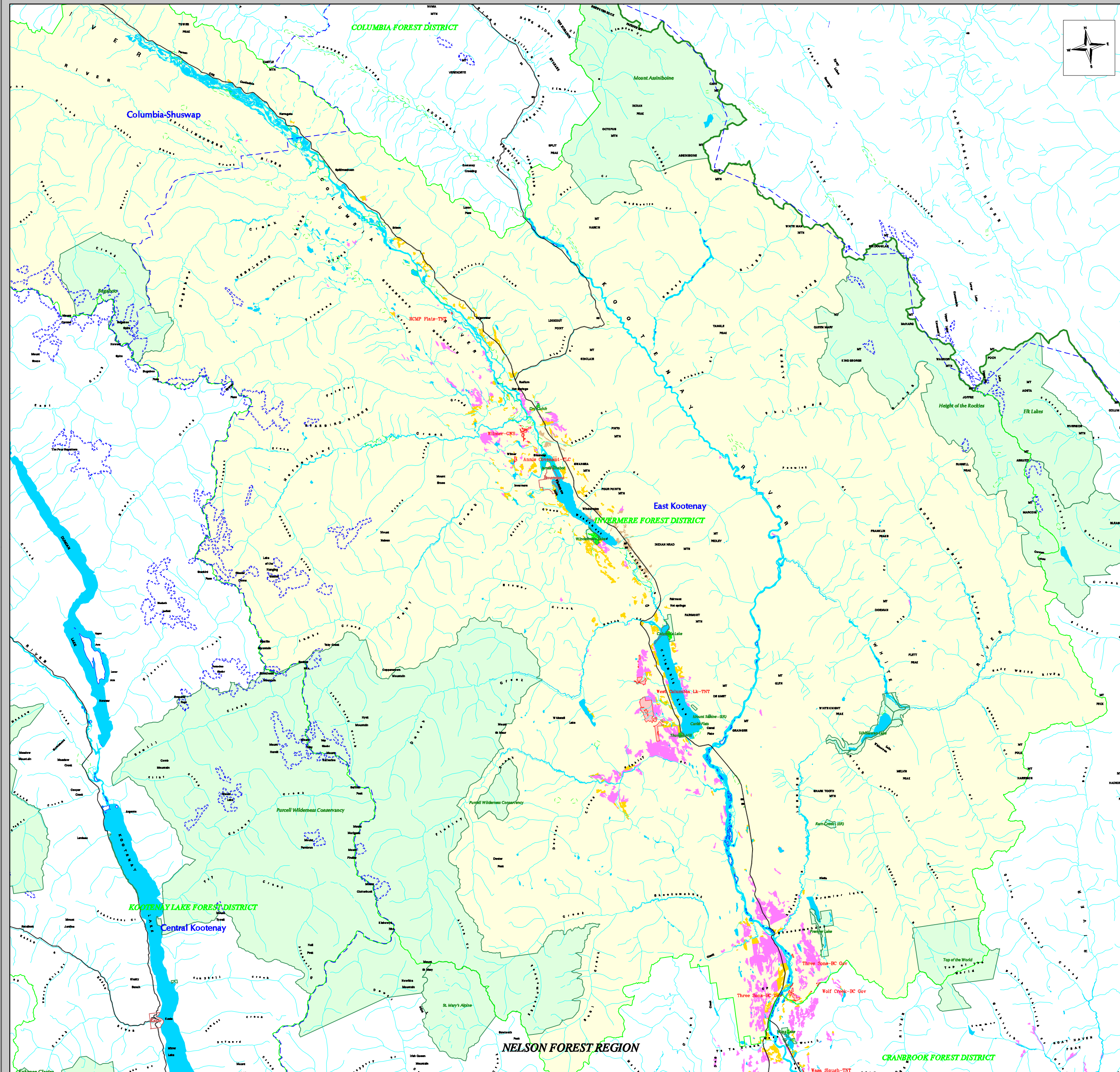


INVERMERE FOREST DISTRICT GRASSLANDS: Land Status



LEGEND

Grasslands Land Status

- Private Land
- Indian Reserve
- Federal Land *
- Crown Land
- Protected Area* or Ecological Reserve
- National Park *
- Non-Governmental Organization Acquired Land *
- Grazing Lease

- Major Water Bodies
- Parks and Protected Areas
- Forest District or TSA of Interest
- Forest Regions
- Forest Districts
- Regional District Boundary
- Municipal Boundary
- Major Highways

GRASSLANDS LAND STATUS DEFINITIONS:

- * Federal Land - includes Military Reserves, Dominion Government Blocks and other land not designated as Indian Reserve.
- * Protected Area - includes parks, protected areas, ecological reserves and wildlife reserves (wildlife reserves in Okanagan TSA only).
- * National Park - relevant only to Invermere Forest District.
- * Non-governmental Organization Acquired Land - land acquired primarily by conservation groups such as The Land Conservancy, The Nature Trust and the Nature Conservancy of Canada.

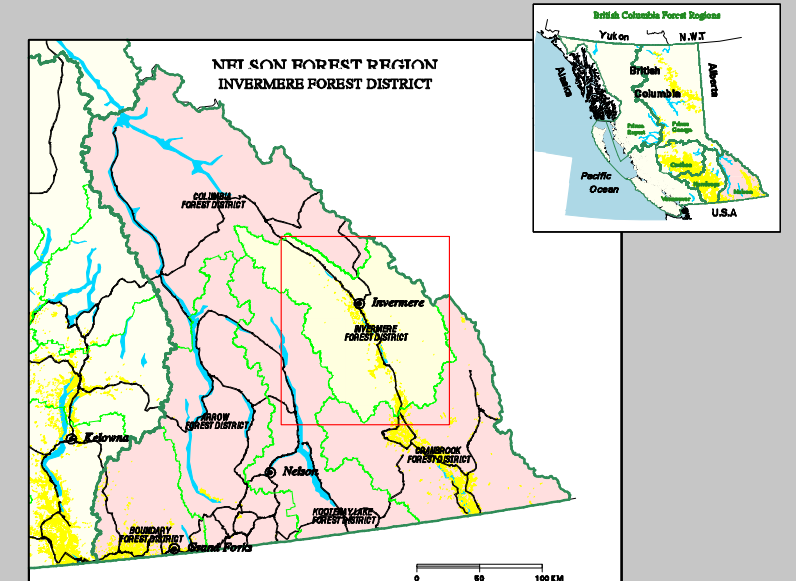
GRASSLANDS DEFINITION:

- * Open dry forest stand adjacent to open grasslands
 - * Open dry forest stand in NDT4
 - * Burned forest stand in Ponderosa Pine or Bunchgrass Biogeoclimatic Zone
 - * Open grasslands with logging history
- * "Open" - having a tree crown closure of less than 10%
 * "Dry forest stand" - specific Douglas Fir, Ponderosa Pine, Lodgepole Pine, or Larch leading stands with a drier second species
 * "NDT4" - Natural Disturbance Type 4; frequent, stand maintaining fires (Interior Douglas Fir, Ponderosa Pine, and Bunchgrass Biogeoclimatic Zones)

Grasslands mapping in the Invermere Forest District (West Fort St. John District and Southwest Fort Nelson District) derived from 1:250 000 scale base data. Mapping in remaining areas of each District derived from 1:20 000 scale base data.



The Grasslands Conservation Council of British Columbia
 2544 Land Street, Kamloops, BC, V2C 0P1
 Phone: 250-774-9787 Fax: 250-774-9287 E-Mail: OCC@grasslands.org
www.grasslands.org



The BC Grasslands Mapping Project is funded by:

Grasslands Source Data: BOP 1:250 000 Biogeoclimatic Zones; BOP 1:20 000 Forest Cover; BOP 1:250 000 Coordinates
 Projection: Albers Equal-Area, NAD 83, GRS 1980
 GIS Data: Compiled by GCC in partnership with BOP, BCFR, BOP LSP and other supporting agencies & organizations.

Scale 1:190 000
 0 10 20 KM

Produced October 2002
 by Cascadia Natural Resource Consultants, Kamloops BC

