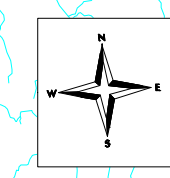
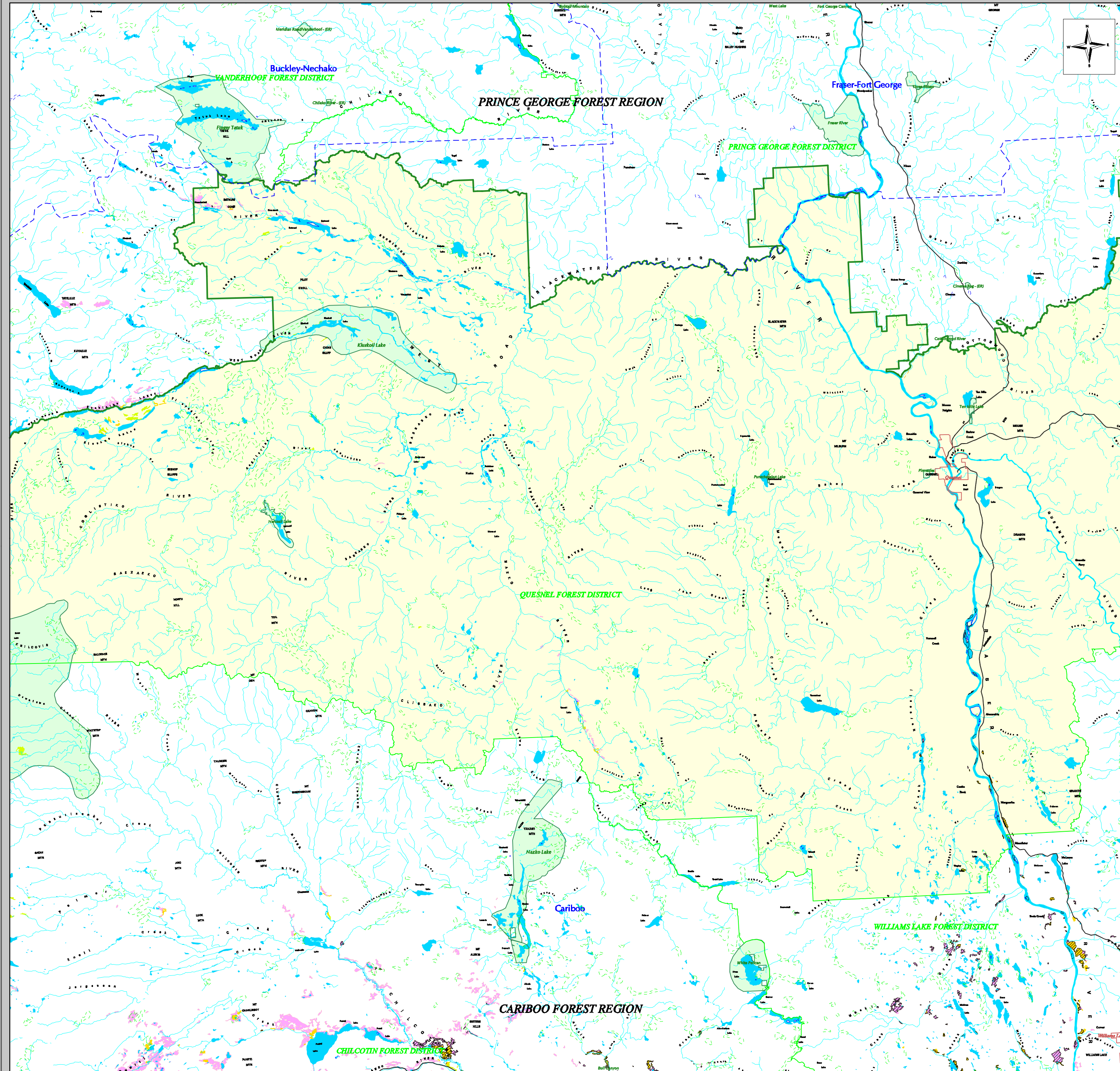


QUESNEL FOREST DISTRICT GRASSLANDS: Range Tenure and ALR



LEGEND

Grasslands Range Tenure and Agricultural Land Reserves

- Grasslands on private land, Federal land, or Indian Reserve
- Crown grasslands under range tenure *
- Crown grasslands not under range tenure
- Agricultural Land Reserve Designation

- Major Water Bodies
- Parks and Protected Areas
- Forest District or TSA of Interest
- Forest Regions
- Forest Districts
- Regional District Boundary
- Municipal Boundary
- Major Highways

RANGE TENURE DEFINITION:
 * Range Tenure - grazing license or permit.

GRASSLANDS DEFINITION:

- * Open dry forest stand adjacent to open grasslands
- * Open dry forest stand in NDT4
- * Burned forest stand in Ponderosa Pine or Bunchgrass Biogeoclimatic Zone
- * Open grasslands with logging history

* "Open" - having a tree crown closure of less than 10%
 * "Dry forest stand" - specific Douglas Fir, Ponderosa Pine, Lodgepole Pine, or Larch forest stands with a deer second species
 * "NDT4" - Natural Disturbance Type-4, frequent, stand maintaining fire (interior Douglas Fir, Ponderosa Pine, and Bunchgrass Biogeoclimatic Zones)

Grasslands mapping in the Malheur Foot Hills (West Fort St. John District and Southwest Fort Nelson District) derived from 1:250 000 scale base data. Mapping in remaining areas of each District derived from 1:20 000 scale base data.



The Grasslands Conservation Council of British Columbia
 The Grasslands Conservation Council of British Columbia
 2944 Larch Street, Kamloops, BC, V2C 0P9
 Phone: 250-774-9787 Fax: 250-774-9287 E-Mail: CCC@grasslands.org
www.grasslands.org

